

Bergpension Ebental

farm, farmhouse in Brixen im Thale



Oberer Sonnberg 36 · A-6364 Brixen im Thale · info@bergpension-ebental.at · +43 664 4713969
Additional information at <https://www.bergpension-ebental.at>

Bergpension Ebental

farm, farmhouse in Brixen im Thale

Welcome to our home at the "Ebentalhof". Our farm is situated at an altitude of 1,040 metres on the quiet and sunny "Sonnberg" mountain high above Brixen i Thale. Its location provides magnificent views of the Kitzbühel Alps' surrounding mountain world. Spend your relaxing and active holidays in our family run Bed & Breakfast which was newly opened in 2014. Our farm livestock includes 25 cows, pigs, hens and cats. We like to spoil you at breakfast where we provide our own farm products eg. fresh eggs, cold meats, smoked bacon and homemade bread. Milk and yogurts are produce from our own cows. In Winter, the ski slope down to the valley is just a few minutes away from our house, while our location is also the perfect departure point for short Winter walks! Begin your hikes, cycling tours, mountain bike tours and casual walks directly from the "Ebentalhof" in Summer. Open all year round!

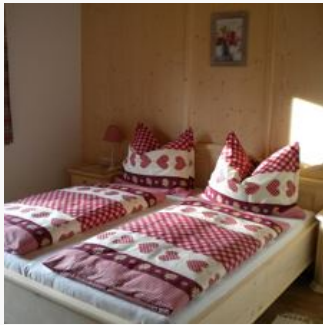


meadowlands · mountain location · on the hiking path · quiet location · near the forest · private setting · right on the slope · infrared cabin

Rooms and Apartments

Current Offers

Double room, shower, toilet, good as new



1-2 Personen · 1 Bedrooms · 20 m²

All rooms are furnished in country-style and are very spacious, with satellite TV, WiFi, shower, WC and of course a balcony.

ab
€ 64,00

per person on 21.04.2025

TO THE OFFER

Conditions

Pets are not allowed!

Bergpension Ebental

farm, farmhouse in Brixen im Thale

Oberer Sonnberg 36
A-6364 Brixen im Thale
Email: info@bergpension-ebental.at
Phone: +43 664 4713969
<https://www.bergpension-ebental.at>