

# Ferienhaus am Brixenbachl

pension in Brixen im Thale

**95 %**

24 Ratings



Brixenbach 17 · A-6364 Brixen im Thale · [info@brixenbachl.at](mailto:info@brixenbachl.at) · **+43 5334 20550**



Tourismusverband Kitzbüheler Alpen - Brixental  
6365 Kirchberg in Tirol, Dorfstraße 11  
AUSTRIA

Telefon: +43 57507 2000  
Fax: +43 57507 2190  
[info@kitzbuehel-alpen.com](mailto:info@kitzbuehel-alpen.com)  
[www.kitzbuehel-alpen.com](http://www.kitzbuehel-alpen.com)

UID: ATU42812809  
Gerichtsstand: Bezirksgericht Kitzbühel  
Raiffeisenbank Westendorf / IBAN AT69 3635 4000 0005 0500 / BIC: RZTIAT22354  
Sparkasse Kitzbühel / IBAN: AT12 2050 5005 0000 2811 / BIC: SPKIAT2K

# Ferienhaus am Brixenbachl

## pension in Brixen im Thale

"Arrive & feel at home" in our pleasant and small family house, where everyone feels good.

The attractive location, just outside the centre of Brixen, the convenience and proximity to the train station, make our house the ideal family residence with spacious and comfortable rooms, some with balcony.

Ferienhaus am Brixenbachl has a restaurant with a terrace (sunny location). For our youngest guests we have a playroom and a playground.

Our kitchen team provides an extensive breakfast buffet in the morning and will pamper you with 3-course menus (only in High Season) in the evening, international, regional, vegetarian and dietary.

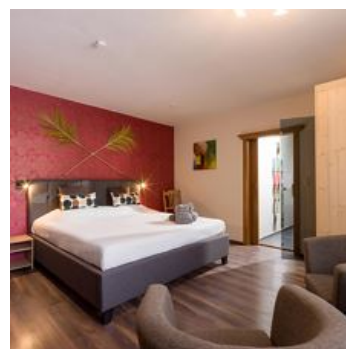
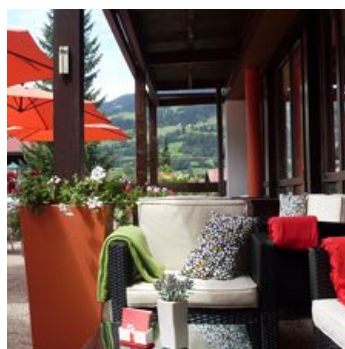
In summer and winter you can start your adventures on the mountain - always with a tip from your hosts - directly from our house.

The ski bus stop is right outside the door.

Please also visit our homepage, [www.brixenbachl.at](http://www.brixenbachl.at)

Our caring team and the de Man family look forward to welcoming you!





near the forest · on the hiking path · outskirts of town · right on the bike path · right on the slope · right at the ski-bus/ hiking-bus/ bus stop · right at the cross-country ski trail · quiet location · infrared cabin

## Rooms and Apartments

### Current Offers

#### Family room, shower, toilet, 1 bed room



1-2 Personen · 1 Bedrooms · 25 m<sup>2</sup>

No Smoking Room – WLAN - Souterrain The room without Balcony(30 m<sup>2</sup>) consists of 3 spaces: a bedroom with double bed and wardrobe. A living room with sitting area, (sleeping) couch and TV. A bathro...

ab  
**€ 55,50**

per person on 21.04.2025

**TO THE OFFER**

#### Family room, shower, toilet, 6 Personen



1-4 Personen · 2 Bedrooms · 55 m<sup>2</sup>

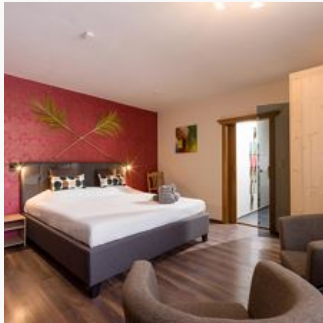
The room (area 60 m<sup>2</sup>) consists of 3 rooms: a bedroom with double bed, bunk bed and wardrobe. A living room with sitting area, (sleeping) couch, TV and Balcony.A bathroom with washbasin, shower and toi...

ab  
**€ 86,50**

per person on 21.04.2025

**TO THE OFFER**

### Suite, shower, toilet



1-2 Personen · 1 Bedrooms · 35 m<sup>2</sup>

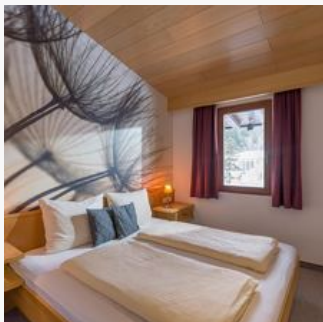
This deluxe double room on the ground floor, consists of 2 spaces. A bedroom with double bed, an infrared cabin and sitting area. A luxurious bathroom with walk-in shower and WC.

ab  
**€ 79,00**

per person on 21.04.2025

**TO THE OFFER**

### suite with shower, bath tub, WC



1-2 Personen · 1 Bedrooms · 35 m<sup>2</sup>

The Suite (60 m<sup>2</sup>) consists of 5 spaces: In the hall, a toilet and a wardrobe. Bedroom with double bed, living room with sitting area, sofa bed, TV and balcony. A bathroom with 2 sinks, bath + shower...

ab  
**€ 91,50**

per person on 21.04.2025

**TO THE OFFER**

## Conditions

Including: heating, electricity, bed linen, towel, parking.

Pets Welcome (on request): € 12,00 per day.

Short stay surcharge: € 12, 00 per day.

Child discounts: from 10% to 100%

## Ferienhaus am Brixenbachl

pension in Brixen im Thale

Brixenbach 17  
A-6364 Brixen im Thale  
Email: [info@brixenbachl.at](mailto:info@brixenbachl.at)  
Phone: +43 5334 20550



### **Carolina & Tonny de Man**

Carolina und Toni de Man sagen herzlich willkommen in unsere Haus.