

4 Elements

holiday apartment in Hopfgarten im Brixental



Lindrainweg 32 · A-6361 Hopfgarten im Brixental · appartement4elements@gmx.at · +43 650 6203323

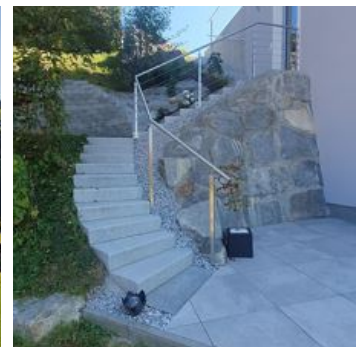
4 Elements

holiday apartment in Hopfgarten im Brixental

The newly built 65 m² apartment is situated at the foot of the Hohe Salve on a sun-kissed hillside location. The 4 elements are reflected in the airy view from the living room over the mountains of the Kitzbühel Alps. The back of the house was built into the slope and is operated with a geothermal heat pump (electricity from 100% renewable energy sources)

In the garden is a large fire bowl and a barbecue area for cosy evenings. The ski slope is only a 5-minute walk from the house. If there is enough snow you can ski directly up to the front door.

The lift station can be reached in two minutes by car, and with a lift ticket you can use the parking garage for free.



mountain location · quiet location · outskirts of town · right on the bike path · near the forest · right on the slope · on the hiking path · meadowlands

Rooms and Apartments

Current Offers

Apartment, shower, toilet, 2 bed rooms



1-5 Personen · 2 Bedrooms · 65 m²

The bright 65 m² flat offers a bedroom with a double bed and a bedroom with a bunk bed and a convertible sofa for 1 adult or 2 children. Furthermore the apartment offers a very spacious, fully equipp...

ab

€ 145,00

per apartment on 20.04.2025

TO THE OFFER

Conditions

Including bed linen and towels, electricity, water, heating and cooling.

Pets are allowed for a fee.

4 Elements

holiday apartment in Hopfgarten im Brixental

Lindrainweg 32

A-6361 Hopfgarten im Brixental

Email: appartement4elements@gmx.at

Phone: +43 650 6203323