

Apartment-Chalet Mödlinghof

farm, farmhouse in Hopfgarten im Brixental



Lindrainweg 20 · A-6361 Hopfgarten im Brixental · moedlinghof@gmail.com
Additional information at <http://www.moedlinghof.at>



Ferienregion Hohe Salve
6300 Wörgl, Innsbrucker Str. 1
AUSTRIA

Telefon: +43 57507 7000
Fax: +43 57507 7020
info@hohe-salve.com
www.hohe-salve.com

UID: ATU44549501
Gerichtsstand: Bezirksgericht Kufstein
Raiffeisenbank Wörgl
IBAN: AT64 3635 8000 0068 9315 / BIC: RZTIAT22358

Apartment-Chalet Mödlinghof

farm, farmhouse in Hopfgarten im Brixental

Newly built chalet opposite the existing farm "Mödlinghof".

The holiday flat is located in the immediate vicinity of the valley slope in Hopfgarten (approx. 300m).

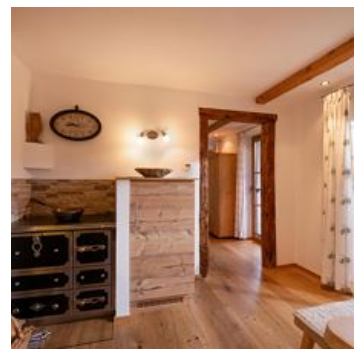
If there is enough snow, the ski run from and to the house is possible. The walk to the gondola lift takes about 8 minutes.

On the Lindrainweg, approx. 1.8 km from the centre of Hopfgarten.

The house is situated on the mountain, in the middle of greenery. Biking and hiking trails start from the Chalet Mödlinghof.

In winter good winter equipment and snow chains required.

For the little guests there is a playground in the garden.



outskirts of town · right on the slope · on the hiking path · quiet location · meadowlands · mountain location · near the forest



Ferienregion Hohe Salve
6300 Wörgl, Innsbrucker Str. 1
AUSTRIA

Telefon: +43 57507 7000
Fax: +43 57507 7020
info@hohe-salve.com
www.hohe-salve.com

UID: ATU44549501
Gerichtsstand: Bezirksgericht Kufstein
Raiffeisenbank Wörgl
IBAN: AT64 3635 8000 0068 9315 / BIC: RZTIAT22358

Rooms and Apartments

Current Offers

Apartment, shower, toilet, 2 bed rooms



2-6 Personen · 2 Bedrooms · 80 m²

The chalet consists of 2 separate bedrooms - one of them with bunk beds, 1 living room with sofa bed, bathroom and toilet are separate from each other. The kitchen is fully equipped with microwave,...

ab
€ 170,00

per apartment on 30.04.2026

TO THE OFFER

Conditions

Electricity, water and heating included.

Tourist tax exclusive

Rubbish: € 7,- exclusive

Pets: € 12,- per day/night exclusive

Please bring your own slippers, as the wooden floor is very sensitive. Therefore, please do not enter the holiday flat with street shoes.

Apartment-Chalet Mödlinghof

farm, farmhouse in Hopfgarten im Brixental

Lindrainweg 20

A-6361 Hopfgarten im Brixental

Email: moedlinghof@gmail.com

<http://www.moedlinghof.at>



Ferienregion Hohe Salve
6300 Wörgl, Innsbrucker Str. 1
AUSTRIA

Telefon: +43 57507 7000
Fax: +43 57507 7020
info@hohe-salve.com
www.hohe-salve.com

UID: ATU44549501
Gerichtsstand: Bezirksgericht Kufstein
Raiffeisenbank Wörgl
IBAN: AT64 3635 8000 0068 9315 / BIC: RZTIAT22358