

## Apartment Mödlinghof

farm, farmhouse in Hopfgarten im Brixental

**95 %**

29 Ratings



Lindrainweg 18 · A-6361 Hopfgarten im Brixental · [moedlinghof@gmail.com](mailto:moedlinghof@gmail.com) · **+43 676 5519390**  
Additional information at <http://www.moedlinghof.at>



Ferienregion Hohe Salve  
6300 Wörgl, Innsbrucker Str. 1  
AUSTRIA

Telefon: +43 57507 7000  
Fax: +43 57507 7020  
[info@hohe-salve.com](mailto:info@hohe-salve.com)  
[www.hohe-salve.com](http://www.hohe-salve.com)

UID: ATU44549501  
Gerichtsstand: Bezirksgericht Kufstein  
Raiffeisenbank Wörgl  
IBAN: AT64 3635 8000 0068 9315 / BIC: RZTIAT22358

# Apartment Mödlinghof

## farm, farmhouse in Hopfgarten im Brixental

Newly built flat at the "Mödling" farm.

The holiday flat is located in the immediate vicinity of the valley slope in Hopfgarten.

If there is enough snow, the ski run from and to the house is possible. The walk to the gondola lift is about 8 minutes.

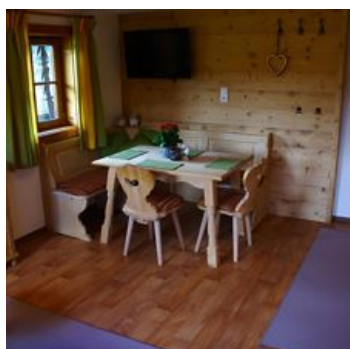
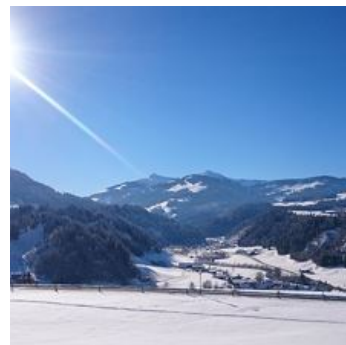
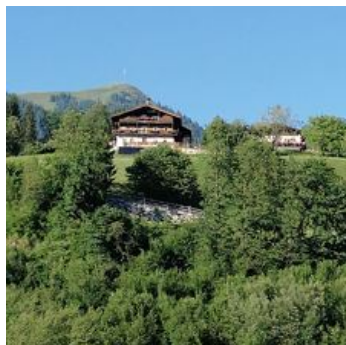
The flat is rustically furnished, on the 1st floor (accessible via a staircase outside).

1 bedroom, 1 kitchen-cum-living-room with pull-out couch (for max. 2 persons), shower/WC, approx. 40 sqm.

Fully equipped kitchen with oven, electric cooker, freezer, crockery, dishwasher.

For the little guests there is a playground in the garden.





mountain location · right on the slope · meadowlands · quiet location · near the forest · on the hiking path · outskirts of town

## Rooms and Apartments

### Current Offers

#### Appartement/1 sleeping-room, shower, toilet



2 Personen · 1 Bedrooms · 38 m<sup>2</sup>

ab

**€ 95,00**

per apartment on 21.04.2025

**TO THE OFFER**

## Conditions

Price includes electricity, water and heating.

Tourist tax exclusive

Pets: € 12,- per day/night exclusive

## Apartment Mödlinghof

farm, farmhouse in Hopfgarten im Brixental

Lindrainweg 18

A-6361 Hopfgarten im Brixental

Email: moedlinghof@gmail.com

Phone: +43 676 5519390

<http://www.moedlinghof.at>