

Embacher Marianne - Rotharlhof

holiday apartment in Hopfgarten im Brixental



Grafenweg 81 · A-6361 Hopfgarten im Brixental · jo.embacher@aon.at · +43 664 73039704



Ferienregion Hohe Salve
6300 Wörgl, Innsbrucker Str. 1
AUSTRIA

Telefon: +43 57507 7000
Fax: +43 57507 7020
info@hohe-salve.com
www.hohe-salve.com

UID: ATU44549501
Gerichtsstand: Bezirksgericht Kufstein
Raiffeisenbank Wörgl
IBAN: AT64 3635 8000 0068 9315 / BIC: RZTIAT22358

Embacher Marianne - Rotharlhof

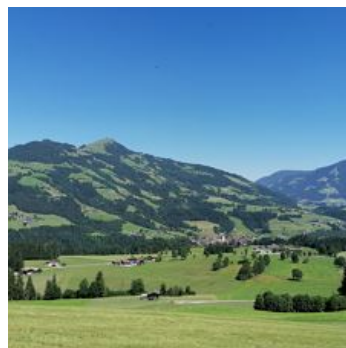
holiday apartment in Hopfgarten im Brixental

Rotharlhof farm is located in an elevated position in the Grafenweg district, about 4km from the centre of Hopfgarten, 3.5 km from the cable car and 1.5 km from the cross-country ski trails.

The road from Hopfgarten to Niederau (3,5 km) and the Wildschönau valley passes near the house.

The house owners live on the ground floor and keep some dairy cows in the stable at the back of the house.

Parking on the estate.

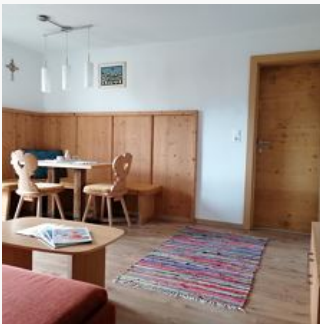


outskirts of town · on the hiking path · mountain location · private setting · meadowlands · quiet location

Rooms and Apartments

Current Offers

Apartment, shower, toilet, balcony



The apartments were entirely renovated in 2013 and provide a lovely, comfortable furnishing, floor heating, sat TV and a balcony with panoramic views of the Brixental and the Hohe Salve. There's stor...

ab
€ 65,00

per apartment on 01.05.2026

TO THE OFFER

1-4 Personen · 1 Bedrooms · 40 m²

Apartment, shower or bath, toilet, 1 bed room



The apartments were entirely renovated in 2013 and provide a lovely, comfortable furnishing, floor heating, sat TV and a balcony with panoramic views of the Brixental and the Hohe Salve. There's stor...

ab
€ 75,00

per apartment on 01.05.2026

TO THE OFFER

1-5 Personen · 1 Bedrooms · 50 m²

Apartment, shower or bath, toilet, 2 bed rooms



1-6 Personen · 2 Bedrooms · 60 m²

The apartments were entirely renovated in 2013 and provide a lovely, comfortable furnishing, floor heating, sat TV and a balcony with panoramic views of the Brixental and the Hohe Salve. There's stora...

ab
€ 95,00

per apartment on 01.05.2026

TO THE OFFER

Conditions

Exclusive: local tax, final cleaning.

Pets are not allowed.

Embacher Marianne - Rotharlhof

holiday apartment in Hopfgarten im Brixental

Grafenweg 81

A-6361 Hopfgarten im Brixental

Email: jo.embacher@aon.at

Phone: +43 664 73039704