

# Flecklhof | Fuchs Johanna und Josef

farm, farmhouse in Hopfgarten im Brixental



92 %

10 Ratings



Fleckweg 25 · A-6361 Hopfgarten im Brixental · [fuchs.fleckl@utanet.at](mailto:fuchs.fleckl@utanet.at) · +43 5335 4456  
Additional information at <http://www.biobauernhof-fleckl.at/>



Ferienregion Hohe Salve  
6300 Wörgl, Innsbrucker Str. 1  
AUSTRIA

Telefon: +43 57507 7000  
Fax: +43 57507 7020  
[info@hohe-salve.com](mailto:info@hohe-salve.com)  
[www.hohe-salve.com](http://www.hohe-salve.com)

UID: ATU44549501  
Gerichtsstand: Bezirksgericht Kufstein  
Raiffeisenbank Wörgl  
IBAN: AT64 3635 8000 0068 9315 / BIC: RZTIAT22358

# Flecklhof | Fuchs Johanna und Josef

## farm, farmhouse in Hopfgarten im Brixental

Hello and welcome to the organic Fleckl farm!

Enjoy the unique location 1150 m above sea level which offers a fantastic panoramic view. Here you'll get rewarded with the first rays of dawn every day - an outstanding experience at the highest situated farm of Hopfgarten.

From the farm to Hopfgarten's town centre it takes you 10 minutes by car.

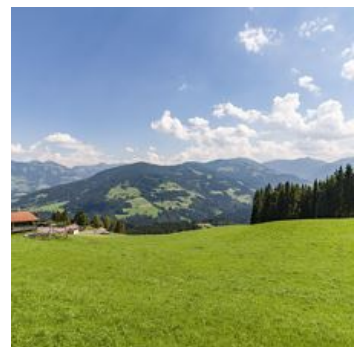
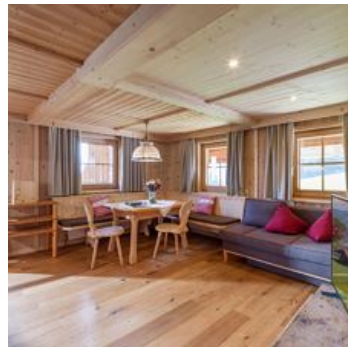
Tradition and customs count a lot on the farm. Our guests appreciate particularly the family atmosphere.

While parents take in the amazing view of the surrounding mountains from the balcony their kids can discover the farm.

The Holiday Region Hohe Salve is always worth a visit in summer. Whether challenging hiking tours or easy themed trails - hiking fun for the whole family is guaranteed. Numerous exciting outings in and around the Kitzbühel Alps make children's eyes shine brighter. The holiday region also offers a varied weekly summer programme as well as first-class childcare service.

In winter young and old skiing enthusiasts enjoy the pe...





meadowlands · mountain location · quiet location · outskirts of town · near the forest · private setting · on the hiking path

## Rooms and Apartments

### Current Offers

#### apartment/2 bedrooms/shower, WC



The cosy apartment Feldalphorn sleeps 2 - 4 persons and is about 53 m<sup>2</sup> in size. It offers a combined kitchen/living-room, a double room and a room with two separate beds. The shower and the toilet are...

ab  
**€ 47,50**

per person on 01.05.2026

**TO THE OFFER**

2-4 Personen · 2 Bedrooms · 53 m<sup>2</sup>

#### apartment/2 bedrooms/shower, WC



The lovingly furnished apartment Hohe Salve offers room for 3 - 5 persons and is about 55 m<sup>2</sup> in size. The apartment provides a fully equipped kitchen-living room with a living room suite, a double room...

ab  
**€ 35,00**

per person on 01.05.2026

**TO THE OFFER**

2-3 Personen · 1 Bedrooms · 55 m<sup>2</sup>

## Conditions

Included: electricity, water, heating, bedding, and towels.

Not included: tourist tax and final cleaning

Pets are not allowed.



Ferienregion Hohe Salve  
6300 Wörgl, Innsbrucker Str. 1  
AUSTRIA

Telefon: +43 57507 7000  
Fax: +43 57507 7020  
info@hohe-salve.com  
www.hohe-salve.com

UID: ATU44549501  
Gerichtsstand: Bezirksgericht Kufstein  
Raiffeisenbank Wörgl  
IBAN: AT64 3635 8000 0068 9315 / BIC: RZTIAT22358

## Flecklhof | Fuchs Johanna und Josef

farm, farmhouse in Hopfgarten im Brixental

Fleckweg 25

A-6361 Hopfgarten im Brixental

Email: [fuchs.fleckl@utanet.at](mailto:fuchs.fleckl@utanet.at)

Phone: +43 5335 4456

<http://www.biobauernhof-fleckl.at/>

