

Pfaringhof mit Gästehaus Vroni

farm, farmhouse in Angerberg



Dorf 40 und 41 · A-6320 Angerberg · gerhard.osl@gmx.at · +43 676 9172367
Additional information at <https://www.pfaringhof.com/>



Ferienregion Hohe Salve
6300 Wörgl, Innsbrucker Str. 1
AUSTRIA

Telefon: +43 57507 7000
Fax: +43 57507 7020
info@hohe-salve.com
www.hohe-salve.com

UID: ATU44549501
Gerichtsstand: Bezirksgericht Kufstein
Raiffeisenbank Wörgl
IBAN: AT64 3635 8000 0068 9315 / BIC: RZTIAT22358

Pfaringhof mit Gästehaus Vroni

farm, farmhouse in Angerberg

Experience a vacation in an idyllic location - holiday on a farm!

The Pfaringhof offers 1 apartment for 1-2 people as well as 2 comfort rooms with shower/WC and breakfast. The Vroni apartment is located directly next to the Pfaringhof and features a newly renovated, spacious apartment for up to 6 people. Free Wi-Fi, children's playground, sunbathing lawn, and parking are available.

In summer: a central starting point for excursions of all kinds - whether on foot, by bike, or mountain bike. For families: don't miss the 7 unique Mountain Experience Worlds!

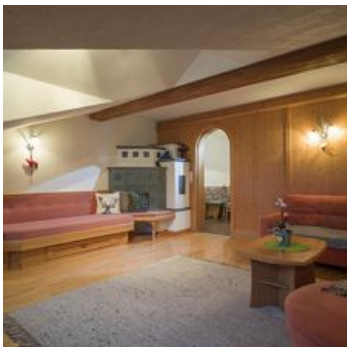
In winter: beginners' ski lift and cross-country ski trail entry right next to the house!

The SkiWelt Wilder Kaiser-Brixental, one of the largest and most modern ski areas in the world, is approximately 13 km away (entry in Itter or Hopfgarten). Also, take advantage of the free ski bus - ski bus stop nearby.

See you soon in Angerberg

Your family Osl





private setting · meadowlands · central location · right at the cross-country ski trail · near the forest · quiet location · on the hiking path · right on the slope



Ferienregion Hohe Salve
6300 Wörgl, Innsbrucker Str. 1
AUSTRIA

Telefon: +43 57507 7000
Fax: +43 57507 7020
info@hohe-salve.com
www.hohe-salve.com

UID: ATU44549501
Gerichtsstand: Bezirksgericht Kufstein
Raiffeisenbank Wörgl
IBAN: AT64 3635 8000 0068 9315 / BIC: RZTIAT22358

Rooms and Apartments

Current Offers

Apartment, bath, toilet, 1 bed room



Comfortable attic flat for 1-2 persons, with a double room and a spacious kitchen/ living room with a convertible sofa bed and TV. Bath with WC. Patio. The apartment is also bookable for one person onl...

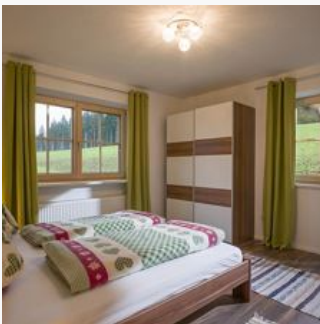
ab
€ 80,00

per apartment on 01.05.2026

TO THE OFFER

1-2 Personen · 1 Bedrooms · 50 m²

Apartment, bath, toilet, 3 bed rooms



The apartment is situated next door, at Haus Vroni, on the first floor. It's been newly renovated and offers 2 double rooms, 1 room with a bunk bed (2-6 persons) and an airy kitchen which is separated...

ab
€ 160,00

per apartment on 01.05.2026

TO THE OFFER

1-4 Personen · 3 Bedrooms · 100 m²

double room with shower, WC



Cosy double room with bath and WC

2-3 Personen · 1 Bedrooms

ab
€ 45,00

per person on 01.05.2026

TO THE OFFER

Double room, shower, toilet



Cosy double room with bath and WC

2-3 Personen · 1 Bedrooms

ab
€ 45,00

per person on 01.05.2026

TO THE OFFER

Conditions

Please contact regarding:

Apartments: +43 676 9172367, gerhard.osl@gmx.at

Rooms: 0043 677 61600025, osl.pfaringhof@angerberg.net

Included: Electricity, heating, water

Excluded: Local tax, final cleaning



Ferienregion Hohe Salve
6300 Wörgl, Innsbrucker Str. 1
AUSTRIA

Telefon: +43 57507 7000
Fax: +43 57507 7020
info@hohe-salve.com
www.hohe-salve.com

UID: ATU44549501
Gerichtsstand: Bezirksgericht Kufstein
Raiffeisenbank Wörgl
IBAN: AT64 3635 8000 0068 9315 / BIC: RZTIAT22358

Pfaringhof mit Gästehaus Vroni

farm, farmhouse in Angerberg

Dorf 40 und 41

A-6320 Angerberg

Email: gerhard.osl@gmx.at

Phone: +43 676 9172367

<https://www.pfaringhof.com/>

